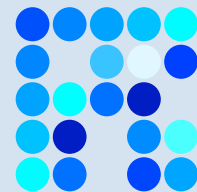


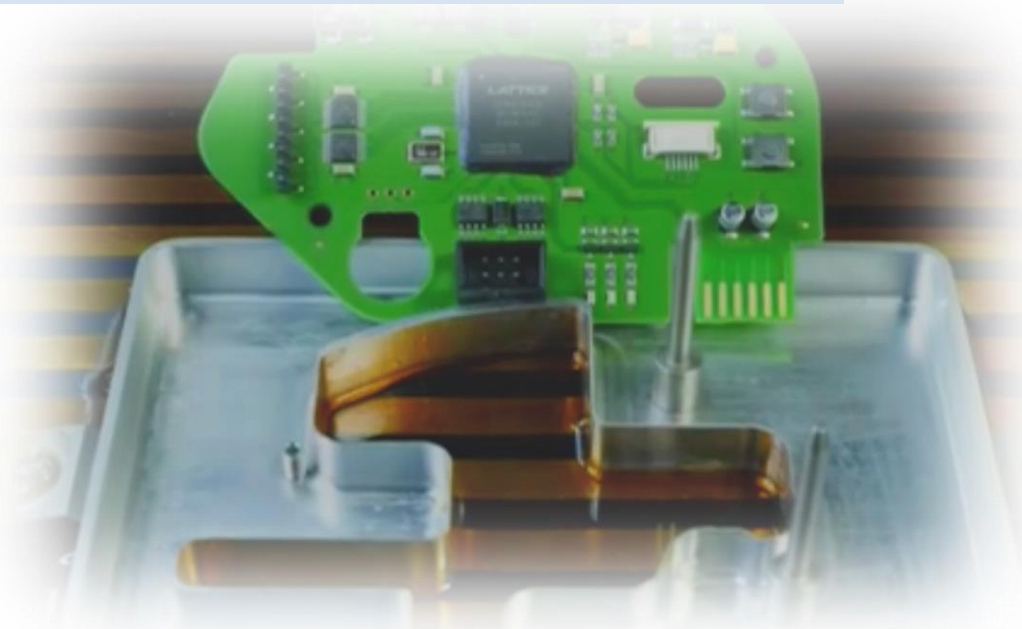
I-Coat®

The Multi-Coat System



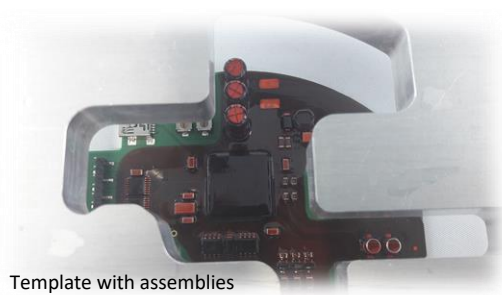
Coating

for precision in the assembly coating



Product Use

- ✓ Selective coating
 - ✓ Direct Coat contact
 - ✓ Dipping of several components
 - ✓ Quick change attachment
 - ✓ Exact coating Areas
 - ✓ Coat on all component surfaces
- Very high edge sharpness
 - No splashing or spray mist
 - Low cycle times
 - Short changeover times
 - Enables secure AOI-testing
 - Optimal protection



Template with assemblies

The EPSYS I-Coat®-System was developed for a very precise and flexible protective coating of electronic assemblies. It combines great flexibility, short changeover times and high precision with the patented I-Coat®-process using dipping templates. The safe and easy-to-learn operation allows the introduction of the coating process in many manufacturing facilities.

Coating facilities
Dosing systems
2K-Dosing system
Jet vents
Drying station
UV-Oven
Inspection systems
Coating sets
Complete equipment
Service & Consulting

I-Coat®

The Multi-Coat System



Coating

for precision in the assembly coating

The I-Coat® process

The basis of the system is the immersion plate, which can be equipped with stencils or with dipping devices depending on the geometry of the assembly.

Selective Coating in the dipping process I-Coat®

In the selective dive mode, stencils are used, which allow a selective and very precise coating.

The modular templates for high-mix production can be mounted or moved on the dip plate as desired. As a result, any desired coating contours can be produced in a simple manner and with little effort. The tooling costs are minimized to a fraction.

The coating is carried out by lowering the template into the immersion bath. This dipping movement is carried out in a defined tilt angle. Air pockets under the module can escape at the highest point.

For high-volume production a template, made using milling technology, is used.

Dive and flood mode

In this mode, the assembly can be immersed or dipped either vertically or horizontally into the coating material. The movement sequence of the dipping or flooding process can be freely programmed. When immersing or flooding the electronic component, air pockets can also be avoided in this mode

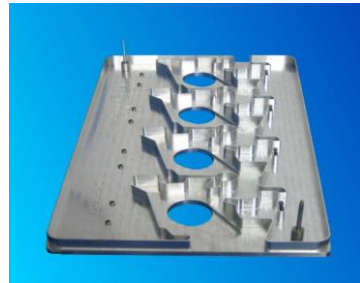
When emptying can be favored by the programming of a tilt angle, the expiration of the excess protection means, so that the use of an additional drip station is not required.

System features

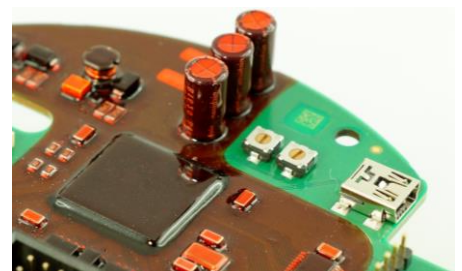
- Dipping, flooding and selective coating with a plant
- Modular tool design, low tool costs
- Flexible protective agent insert with a wide range of viscosities
- Easy programmability of the movement process
- Easy operation of the system in production mode
- Short set-up times
- Economical for high-mix and high-volume

Layer characteristics

- Closed coating surface as in a proven dip painting
- Highest precision without splashes or spray mist
- Optimum coating for AOI-test with precise coating definition
- Coating application on all component surfaces



Optimum AOI inspection of the sharp coating boundaries



Coating of all component surfaces possible

Coating facilities
Dosing systems
2K-Dosing system
Jet vents
Drying station
UV-Oven
Inspection systems
Coating sets
Complete equipment
Service & Consulting

I-Coat®

The Multi-Coat System



Coating

for precision in the assembly coating

System description

Cleaning- and rinsing function

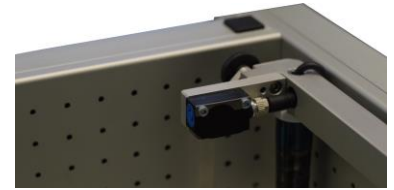
The automatic cleaning and rinsing function with level monitoring of all containers facilitates the necessary maintenance task considerably.



Controlled pump system



Paint container on balance



Sensor filling height in the bath

Manufacturing integration

EPSYS I-Coat was designed for integration into an existing exhaust air system. Optionally, a passive U-suction can be mounted to efficiently remove the harmful solvent vapors from the work area.



Immersion bath with 2 stepper motors, stencil holder and optional U-suction

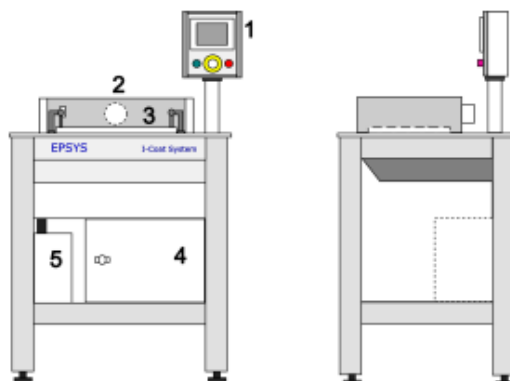


SIMATIC-controller with color touch display

Machine concept

The machine is designed for a multi-shift operation. The construction was realized with standard components. This requires a low maintenance and thus high manufacturing reliability. The templates and devices are virtually wear-free.

All parts are easily accessible and easy to clean.



1. Control unit with touch panel
2. Passive U-suction
3. Coating unit consisting of immersion bath with tilting plate
4. Control area
5. Coating tank with quantity monitoring

Coating facilities
Dosing systems
2K-Dosing system
Jet vents
Drying station
UV-Oven
Inspection systems
Coating sets
Complete equipment
Service & Consulting

I-Coat®

The Multi-Coat System



Coating

for precision in the assembly coating

Technical Data

Dimension (WxDxH):	800 x 650 x 930 mm, (+550 mm for the control panel)
Weight:	approx. 80 kg
Diving depth maximum:	70 mm
Bath area standard:	250 x 350 mm
Max. Coating area:	240 x 300 mm
Diving speed.:	0,1 mm/sec. up to 50 mm/sec.
Connection:	230 V 1~, 500 VA
Exhaust air:	150m ³ /h
Control:	Siemens SPS with Touch-Panel
Pump system:	Coat dosing pump with speed control
Troughput diving:	Depending on the device

Options

30011001	Level indicator for the amount of paint in the tank
30011002	Temperature control (bidirectional) for the immersion bath
30011003	Flow monitor for the extraction
30011004	U-suction in the work area
30011005	Viscosity measurement in the paint container
30011006	Viscosity control (in connection with 30011005)
30011007	Automatic cleaning and rinsing function

For a complete workspace you also need



Quick drying system EPSYS VES

Low energy costs
Safe drying
Little space



Work and inspection station I-LED

Easy control under black light
Comfortable reworking
Safe surface extraction

Distributor:

EPSYS is a producer of manufacturing equipment and accessories for the process protective coating, drying and control. EPSYS offers the complete set-up and integration of the required components for assembly protection.

Engineering Office EPSYS

Paul Voinea Fon +49 911 23980460
Nimrodstraße 9/2 Fax +49 911 23980469
90441 Nürnberg info@inno-coat.de

Reserve technical changes
V2018-11

Coating facilities
Dosing systems
2K-Dosing system
Jet vents
Drying station
UV-Oven
Inspection systems
Coating sets
Complete equipment
Service & Consulting

EPSYS
electronic protective systems